



www.pentashot.eu

Product catalogue



NEW



S-Box Connect

- All-new wireless precision target. Suitable for training and competition.
- Simple app for controlling and adjusting the target. Powered by household electricity or power bank. Only 10 cm deep.
- Available colour: blue.

Technical parameters

Dimensions	19 cm width, 24.5 cm height and 10 cm depth
Weight	950 grams (target minus packaging)
Size of HIT zone	Æ 59.5 mm
Size of MISS zone	175 mm x 175 mm
Shooting distance	From 5 m to 10 m
Shooting time	50 seconds in competition mode. In individual mode, the shooting time can be adjusted. In training mode, time is not limited.
Integrated signal lights	YES
Handle for tripod	YES
Integrated hanging system	YES
Compatible external signal lights	PENTASHOT and NAVISTREET
Accepted laser signal	UIPM laser signal 15.6 mS
Power supply	DC 5.1V 3AAA (only with included adapter), power bank (only according to specifications of target manufacturer, see Target User Manual)
Solar resistance	50,000 LUX
Operating temperature	+10°C to +40°C
Compatible operating systems	Android 4.3 or iOS 11 or later
Update function	App in Google Play or AppStore Target software at manufacturer



LB 16 laser emitter

- New generation of laser with more sophisticated optics, requiring one standard AAA battery.
- Suitable for all pistols used in modern pentathlon.
- Homologated according to UIPM standard 2016.
- Available colours: red, blue, black.

Technical parameters

Dimensions	20 mm x 23 mm x 289 mm (version with adapter for MORINI pistol)
Weight	170 g (with aluminium adapter) 220 g (with steel adapter)
Shooting distance	From 3 m to 10 m
Adapter for various air pistols	YES (list at manufacturer)
Laser class	I. (per EN 60825-1:2014)
Laser class certification	No. 1140735 (Electrotechnical Testing Institute, Czech Republic)
Laser module	FLPM20
Laser signal	15.6 ms UIPM laser signal
Wavelength	650 nm
Diameter of laser beam	4 mm \pm 5% / 10 m
Minimum laser power with weak battery	2.5 mW
Minimum laser power with new battery	3.2 mW
Emitter power supply	One 1.5V AAA alkaline battery
Number of light shots per AAA battery	50,000 at 20°C
Operating temperature	From 10°C to 50°C
Update function	Software at manufacturer



LB 14 laser emitter

- New laser system! Easy to use, powered by a standard AA battery, more precise optics! Suitable for all guns used in modern pentathlon.
- Homologated according to UIPM standard 2016.
- Available colours: blue, red, green, black.

Technical parameters

Dimensions	Diameter 30 mm, length 157 mm (short version) Diameter 30 mm, length 187 mm (long version)
Weight	210 g (short version) 235 g (long version)
Shooting distance	From 3 m to 10 m
Adapter for various air pistols	YES (list at manufacturer)
Laser class	I. (per EN 60825-1:2014)
Laser class certification	No. 1140735 (Electrotechnical Testing Institute, Czech Republic)
Laser module	FLPM20
Laser signal	15.6 ms UIPM laser signal
Wavelength	650 nm
Diameter of laser beam	4 mm \pm 5% / 10 m
Minimum laser power with weak battery	2.5 mW
Minimum laser power with new battery	3.2 mW
Emitter power supply	One 1.5V AAA alkaline battery
Number of light shots per AAA battery	50,000 at 20°C
Operating temperature	From 10°C to 50°C
Update function	Software at manufacturer

WITH LC 14



WITH LB 16



LB 12 laser simulator

- FLP 12 version 2016 is a new-generation laser pistol delivered with a unique, completely new method of FAST CHARGING! The gun is charged with an LB 16 or LC 14 emitter with a universal or anatomical grip. The pistol comes in a plastic case with all necessary accessories.
- Homologated according to UIPM standard 2016.
- Available colours: red, blue, black, gold.
- Additional options: sights, front sight with light guide, weight handle, two-handed stock.

Technical parameters

	WITH LC 14	WITH LB 16
Dimensions	370 mm x 150 mm x 50 mm	370 mm x 150 mm x 50 mm
Simulator type	single-acting, laser	single-acting, laser
Weight	With LC 14 emitter 890 g to 930 g depending on LC 14 type (long or short version)	With LB 16 emitter 885 g to 930 g depending on adapter type (aluminium or iron)
Shooting distance	From 3 m to 10 m	From 3 m to 10 m
Additional weight in standard equipment	NO	YES
Weight purchase option	YES	YES
External handle for weight	YES	YES
Optical sight purchase option	YES	YES
Laser class	I. (per EN 60825-1:2014)	I. (per EN 60825-1:2014)
Laser class certification	No. 1140735 (Electrotechnical Testing Institute, Czech Republic)	No. 1140735 (Electrotechnical Testing Institute, Czech Republic)
Laser module	FLPM20	FLPM20
Laser signal	15.6 ms UIPM laser signal	15.6 ms UIPM laser signal
Wavelength	650 nm	650 nm
Diameter of laser beam	4 mm \pm 5% / 10 m	4 mm \pm 5% / 10 m
Minimum laser power with weak battery	2.5 mW	2.5 mW
Minimum laser power with new battery	3.2 mW	3.2 mW
Emitter power supply	1.5V AAA alkaline battery	1.5V AAA alkaline battery
Number of light shots per AAA battery	50,000 at 20°C	50,000 at 20°C
Operating temperature	From 10°C to 50°C	From 10°C to 50°C
Update function	Software at manufacturer	Software at manufacturer

FLP 15 AND FLP 15 COMPACT



LB 15 laser simulator

- FLP 15 version 2016 is a new-generation laser pistol delivered with a unique, completely new method of FAST CHARGING! The pistol comes with a universal or anatomical grip, in a plastic case with all necessary accessories.
- The pistol comes in STANDARD and COMPACT versions.
- Homologated according to UIPM standard 2016.
- Available colours: red, blue and gold.
- Additional options: sights, front sight with light guide, weight handle, two-handed stock.

Technical parameters

	FLP 15 COMPACT	FLP 15
Dimensions	340 mm x 150 mm x 50 mm	370 mm x 150 mm x 50 mm
Simulator type	single-acting, laser	single-acting, laser
Weight	From 650 g without weight	From 720 g
Shooting distance	From 3 m to 10 m	From 3 m to 10 m
Additional weight in standard equipment	YES (2 units, 40 g per unit)	YES (2 units, 40 g per unit)
Weight purchase option	YES	YES
External handle for weight	YES	YES
Optical sight purchase option	YES	YES
Laser class	I. (per EN 60825-1:2014)	I. (per EN 60825-1:2014)
Laser class certification	No. 1140735 (Electrotechnical Testing Institute, Czech Republic)	No. 1140735 (Electrotechnical Testing Institute, Czech Republic)
Laser module	FLPM20	FLPM20
Laser signal	15.6 ms UIPM laser signal	15.6 ms UIPM laser signal
Wavelength	650 nm	650 nm
Diameter of laser beam	4 mm \pm 5% / 10 m	4 mm \pm 5% / 10 m
Minimum laser power with weak battery	2.5 mW	2.5 mW
Minimum laser power with new battery	3.2 mW	3.2 mW
Emitter power supply	1.5V AAA alkaline battery	1.5V AAA alkaline battery
Number of light shots per AAA battery	50,000 at 20°C	50,000 at 20°C
Operating temperature	From 10°C to 50°C	From 10°C to 50°C
Update function	Software at manufacturer	Software at manufacturer

FLP EVO



- The FLP EVO laser simulator is for use during instructional courses, training or competitions in modern pentathlon. It is designed to shoot a laser beam activated by a trigger.
- The FLP EVO laser simulator's emitter is an FLP 20 laser module with a 15.6 ms code. This code is completely compatible with the standards of the International Modern Pentathlon Union (UIPM).
- Available colours: red, blue and gold.
- Additional options: sights, front sight with light guide, weight handle, two-handed stock.

Technical parameters

	FLP EVO
Dimensions	355 mm x 150 mm x 50 mm
Simulator type	single-acting, laser
Weight	From 720 g without weight
Shooting distance	From 3 m to 10 m
Additional weight in standard equipment	NO
Weight purchase option	YES
External handle for weight	YES
Optical sight purchase option	YES
Laser class	I. (per EN 60825-1:2014)
Laser class certification	No. 1140735 (Electrotechnical Testing Institute, Czech Republic)
Laser module	FLPM20
Laser signal	15.6 ms UIPM laser signal
Wavelength	650 nm
Diameter of laser beam	4 mm \pm 5% / 10 m
Minimum laser power with weak battery	2.5 mW
Minimum laser power with new battery	3.2 mW
Emitter power supply	1.5V AAA alkaline battery
Number of light shots per AAA battery	50,000 at 20°C
Operating temperature	From 10°C to 50°C
Update function	Software at manufacturer

GLS 17



GLS 17 laser simulator

- The GLS 17 laser simulator is for use in practice courses, training or in modern pentathlon during moving competition with laser pistol shooting. One of the main parts of the GLS 17 laser simulator is the FLP 20 laser module with a 15.6 ms UIPM code emitter.
- Homologated according to UIPM standard 2016.
- Available colours: red, blue, green, yellow, anthracite and pink.
- Additional options: sights, front sight with light guide, anatomical grips of various sizes.

Technical parameters

Dimensions	355 mm x 150 mm x 50 mm
Simulator type	single-acting, laser
Weight	650 g lighter version GLS 17 “K” 780 g with universal handle 830 g with anatomical handle
Shooting distance	From 3 m to 10 m
Additional weight in standard equipment	NO
Weight purchase option	YES
External handle for weight	NO
Optical sight purchase option	YES
Laser class	I. (per EN 60825-1:2014)
Laser class certification	No. 1140735 (Electrotechnical Testing Institute, Czech Republic)
Laser module	FLPM20
Laser signal	15.6 ms UIPM laser signal
Wavelength	650 nm
Diameter of laser beam	4 mm ± 5% / 10 m
Minimum laser power with weak battery	2.5 mW
Minimum laser power with new battery	3.2 mW
Emitter power supply	1.5V AAA alkaline battery
Number of light shots per AAA battery	50,000 at 20°C
Operating temperature	From 10°C to 50°C
Update function	Software at manufacturer



Hit&Miss training and competition target

- The Hit&Miss target is for instruction, training and competition use. It is powered by standard AA batteries. A signal light is part of the Hit&Miss target, but a competition light can also be attached to it. The target is also offered with easy software for displaying shooting results.
- Homologated according to UIPM standard 2016.
- Available colours: red, blue, green, yellow, black and pink.
- Optional add-ons: tripod with target handle, external signal lights.

Technical parameters

Dimensions	19 cm width, 27 cm height and 3.2 cm depth
Weight	700 g with batteries (target without packaging)
Dimensions of HIT zone	Æ 59.5 mm
Dimensions of MISS zone	175 mm x 175 mm
Shooting distance	From 5 m to 10 m
Shooting time	50 seconds from the first shot to the HIT or MISS zone
Integrated signal lights	YES
Tripod fitting	NO
Integrated hanging system	YES
Compatible external signal lights	PENTASHOT or NAVISTREET
Accepted laser signal	15.6 ms UIPM laser signal
Power supply	Two 1.5V AA alkaline batteries
Sunlight resistance	Min. 80,000 LUX
Operating temperature	From +10°C to +50°C
Update function	Target software at manufacturer



Hit&Miss Connect

The Hit&Miss Connect target is for instruction, training and competition in laser run and modern pentathlon. The target evaluates whether the beam struck the HIT or MISS zone. A shot to the hit zone is signalled when a green LED lights up. A shot to the miss zone is signalled when a red LED lights up. The Hit&Miss Connect target is especially intended for use with the PENTASHOT application, which is for displaying results and setting the target. This application has three main setting modes, which are described in detail in the manual. The target can be powered by two 1.5V batteries or through a USB cable from a power outlet.

Available colours: red, blue, green, yellow, black and pink.

Optional add-ons: tripod with target handle, external signal lights, power bank (only those that meet the target manufacturer's specifications).

Technical parameters

Dimensions	19 cm width, 27 cm height and 3.2 cm depth
Weight	684 g with batteries (target without packaging)
Dimensions of HIT zone	Æ 59.5 mm
Dimensions of MISS zone	175 mm x 175 mm
Shooting distance	From 5 m to 10 m
Shooting time	50 seconds in competition mode. In individual mode, the shooting time can be adjusted. In training mode, time is not limited.
Integrated signal lights	YES
Tripod fitting	NO
Integrated hanging system	YES
Compatible external signal lights	PENTASHOT or NAVISTREET
Accepted laser signal	15.6 ms UIPM laser signal
Power supply	Two 1.5V AA alkaline batteries; with USB cable from power outlet
Sunlight resistance	Min. 80,000 LUX
Operating temperature	From +10°C to +50°C
Compatible operating systems	Android 4.3 or iOS 11 or later
Update function	App in Google Play or AppStore Target software at manufacturer



HIT Compact “travelling” target

- The HIT Compact target is for instructional and training use. It is powered by a standard AA battery. The HIT Compact target also has signal lights.
- With its compact dimensions, it's ideal for training on the road.

Technical parameters

Dimensions	12 cm width, 13 cm height and 3.3 cm depth
Weight	260 g with batteries (target without packaging)
Size of HIT zone	Æ 59.5 mm Æ 30.0 mm with mounted reduction surface
Shooting distance	From 3 m to 10 m
Shooting time	50 seconds from the first shot to the HIT zone.
Integrated signal lights	YES
Handle for tripod	NO
Integrated hanging system	YES
Accepted laser signal	15.6 ms UIPM laser signal
Power supply	One 1.5V AA alkaline battery
Sunlight resistance	min. 70,000 LUX
Operating temperature	From +10°C to +50°C
Update function	Target software at manufacturer

Add-on weights and holders

- For the FLP EVO, FLP 15 and FLP 15 Compact models, we offer optional add-on holders and weights for weighting the pistol to your needs. Weights are always sold in pairs.
- Available weights: 10 grams, 20 grams, 30 grams, 40 grams.



HANDLE WITH WEIGHT FOR FLP EVO



HANDLE WITH WEIGHT FOR FLP 15

Target brackets

- For the HIT Compact, Hit&Miss, Hit&Miss Connect and S-Box Connect targets, we offer brackets that allow mounting on a wall or use with a tripod.



CE
HIT&MISS
SN: HM
PENTASHOT
Made in Czech Republic

Sport headband with eye cover

- The sport headband with eye cover is for sport shooting. The size can be adjusted for head size. Each headband has two covers — one translucent and the other opaque.
- Available colours: red, blue, green, grey, black and pink.



HEADBAND WITH TRANSLUCENT COVER



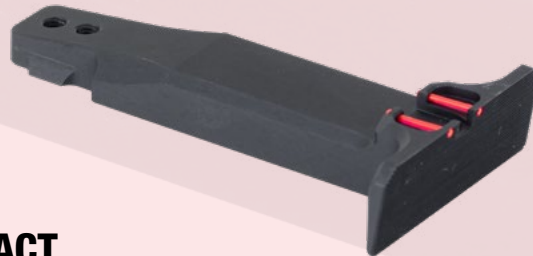
HEADBAND WITH OPAQUE COVER

Visors and front sights with light guides

- Visors and front sights with light guides are mainly for highlighting the targeted image, such as in low light.
- Available for: GLS 17, FLP EVO, FLP EVO Compact, FLP 12, FLP 15 and FLP 15 Compact.
- Available light guide colours: green and red.



SIGHTS FOR GLS 17



SIGHTS FOR FLP EVO AND EVO COMPACT



SIGHTS FOR FLP 12, FLP 15 AND FLP 15 COMPACT



www.pentashot.eu

Address: PENTASHOT EU s.r.o.
Zámecká 2315/9
70200 Ostrava

Delivery address: PENTASHOT EU s.r.o.
Kosmova 1090/11
70200 Ostrava

E-mail: jiri@pentashot.eu
business@pentashot.eu
info@pentashot.eu

Phone numbers: +420 605 252 433
+420 773 002 110
+420 607 056 112